

NOTES:

RESIDENTIAL OCCUPANCIES A, B, C3 & E TABLE 3.3 SB-1 AS/NZS 1170.1
GLASS PANELS ARE AT LEAST 1000mm WIDE UNLESS CONNECTED BY AN INTER LINKING HANDRAIL.

A HANDRAIL IS REQUIRED FOR STAIRS AND RAMPS EXCEEDING 1:20 SLOPE
HEIGHTS ARE MEASURED FROM THE BASE AT TOP OF CLAMP TO TOP OF GLASS.

OCCUPANCY TYPE:

A - MAXIMUM HEIGHT - 1100mm USING 12MM TOUGHENED GLASS, 1500MM USING 15MM TOUGHENED GLASS OR 1000MM USING 12MM TOUGHENED LAMINATE.

LAMINATE INTERLAYER NOT INCLUDED IN GLASS THICKNESS.

B, E & C3 - MAXIMUM HEIGHT - 1030mm USING 12mm TOUGHENED, 1300MM USING 15MM TOUGHENED GLASS OR 1000MM USING 12MM TOUGHENED LAMINATE.

LAMINATE INTERLAYER NOT INCLUDED IN GLASS THICKNESS.

TIMBER DESIGN IS THE RESPONSIBILITY OF OTHERS.
AN ENGINEERS REPORT ON SUITABILITY IS RECOMMENDED

DEFLECTION OF GLASS UNDER SLS LOADS IS RESTRICTED TO A MAXIMUM OF 30mm.

ALL FIXING HARDWARE TO BE GRADE 316 STAINLESS STEEL.

DURATEC POWDERCOAT OR 25 MICRON ANODISED FINISH IS RECOMMENDED ON THE COVERS FOR ALL INSTALLATIONS ESPECIALLY WITHIN COASTAL AREAS.

THIS PROPRIETARY BALUSTRADE SYSTEM HAS BEEN DESIGNED IN CONJUNCTION WITH THE GANZ BALUSTRADE DESIGN TABLE SB-1 AND COMPLIES WITH THE NEW ZEALAND BUILDING CODE CLAUSES B1 STRUCTURAL, B2 DURABILITY, F2 HAZARDOUS BUILDING MATERIALS AND F4 SAFETY FROM FALLING THIRD ADDITION, SUBJECT TO:

- ALL PRODUCTS MEETING THEIR PERFORMANCE SPECIFICATION

- INSTALLATIONS MUST BE IN ACCORDANCE WITH THE INTENT OF THIS DRAWING AND COMPLY WITH NZS 4223.3.2016 REQUIREMENTS.

THE GANZ TABLE SB-1 ALLOWS A MAXIMUM ULS OF 2.1KPa AND SLS OF 1.5KPa DESIGN.

TIMBER FIXING DESIGN NOTE:

50X50X3MM STAINLESS WASHER ARE TO BE USED ON BALUSTRADES ABOVE 1300MM

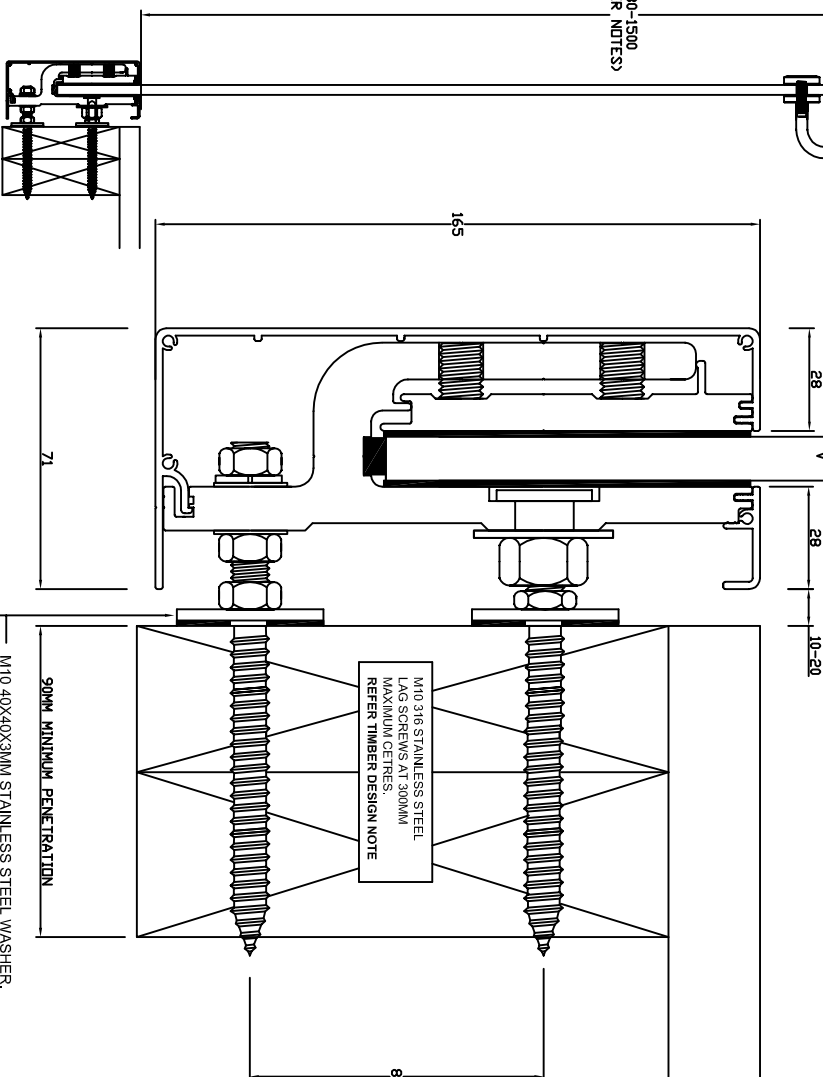
DESIGN ASSUMES BASE FIXING INTO DRY MSG-8 TIMBER OR BETTER.
ENGINEERS DESIGN RECOMMENDED FOR WET TIMBER SITUATIONS.

THE DESIGN HAS BEEN VERIFIED BY AN INDEPENDENT ENGINEERING CONSULTANT AND A PRODUCER STATEMENT PS1 DESIGN IS AVAILABLE.

HANDRAIL OPTIONS



NOTE:
TO ACHIEVE A 10MM SPACING SET THE TOP STUD LENGTH AT 25MM FROM FINISHED FACE AND THE BOTTOM AT 55MM OR INCREASE ACCORDING TO INDIVIDUAL REQUIREMENT.



M10 40X40X3MM STAINLESS STEEL WASHER.
NOTE: 50X50X3MM STAINLESS WASHERS TO BE USED WHEN BALUSTRADE HEIGHT IS ABOVE 1300MM.
ON WATER TIGHT DECKS INSTALL NEOPRENE GASKET BEHIND AND SEALANT AROUND BOLT PENETRATION THROUGH FACE TIMBER.

FIXINGS DETAIL FOR LAG SCREW FIXING AS SHOWN TO BE A MAXIMUM OF 300MM CENTRES. END OF CHANNEL OR JOINTS TO BE A MAXIMUM 150MM.
MAXIMUM BALUSTRADE HEIGHT IN HIGH WIND SITUATIONS - 1200MM AND 1300MM IN MEDIUM WIND SITUATIONS.

DRAWING UPDATED 19/05/16 TO INCLUDE NZS 4223.3.2016 REQUIREMENTS
DRAWING UPDATED 29/11/17 TO CORRECT GLASS TYPES.

OPUS™ MANUFACTURING LTD.
11 Grasslands Place
P.O.Box 5750 Frankton, Hamilton, New Zealand
Telephone: +64 7 847 5001
Fax: +64 7 847 5003

OPUS FACE-FIXED BALUSTRADE SYSTEM FOR OCCUPANCIES A, B, C3 & E RECOMMENDED FIXING FOR FACE FIX TIMBER

 OPUS MANUFACTURING LTD 2012

DRAWING NUMBER: OBFC/S
TECHNICAL MANUAL PAGE 83D